

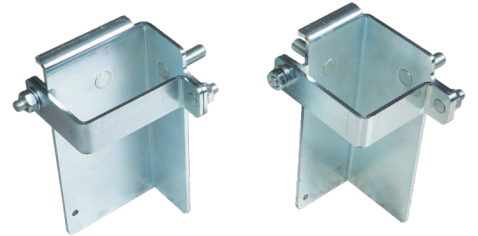
# BERGVIK MOUNTING CLAMP

## FOR CABLE LADDER BRACKETS

Bergvik's pedestal mounting clamp for cable ladders is an accessory customized for Iso Floor and Iso Floor Seismic pedestals, for floor height of minimum 400 mm. The mounting clamps are suited for the most common brackets in the market. You can also attach other equipment, such as "Starline" rails directly to the mounting clamps.

The mounting clamps are very easy to install and have support studs (2 pieces M10 self clinching screw) for assembly of cable ladder brackets on both sides. If support studs are needed on more sides, two units can be connected, which gives additional options.

The mounting clamp is easily mounted to the pedestals with 2 pieces of M8 nuts that come with the product kits. The holder clamps are delivered electro-plated and come complete for mounting of 2 pieces of cable ladder brackets per pedestal.



ART. NO		DESCRIPTION	
46-8040		80/40 mounting clamp suited for Iso Floor pedestal	
46-6060		60/60 mounting clamp suited for HiFlex Floor pedestal	

LENGTH	WIDTH	DEPTH	
160 mm	80 mm	40 mm	
160 mm	60 mm	60 mm	

FINISH	MAXIMUM LOADING PER BRACKET	
Electro-plated 15 µm	At c/c 1000 mm, max loading per running meter ladder is 300 kg	
	At c/c 2000 mm, max loading per running meter ladder is 150 kg	

